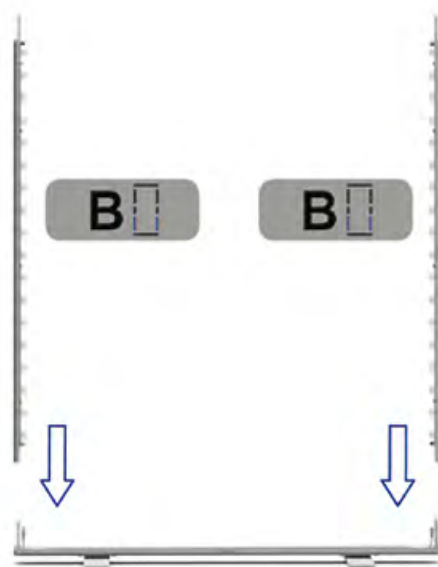
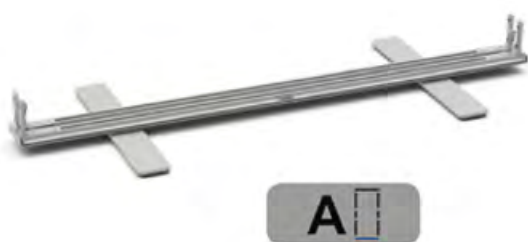
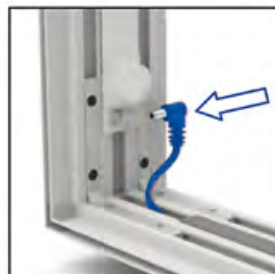
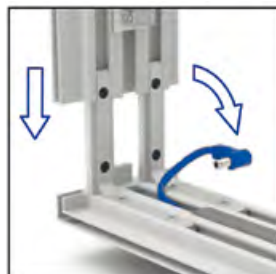
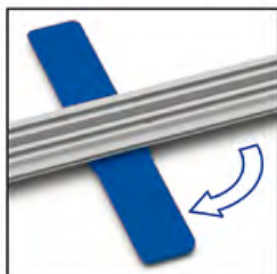
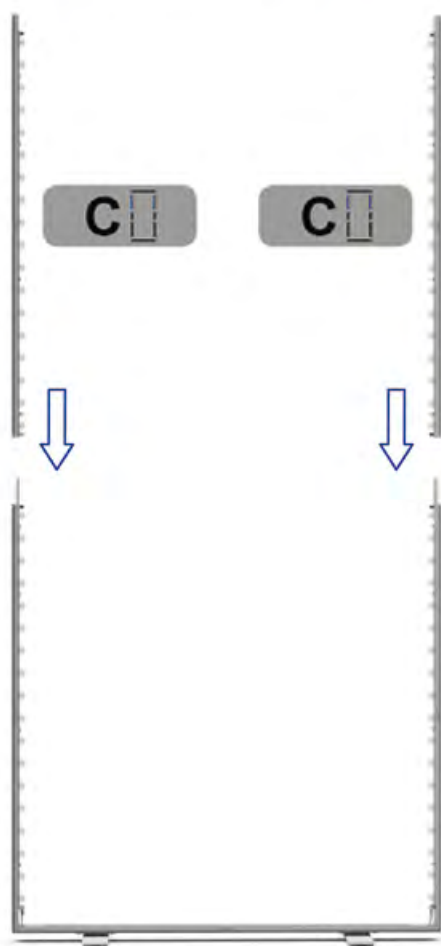


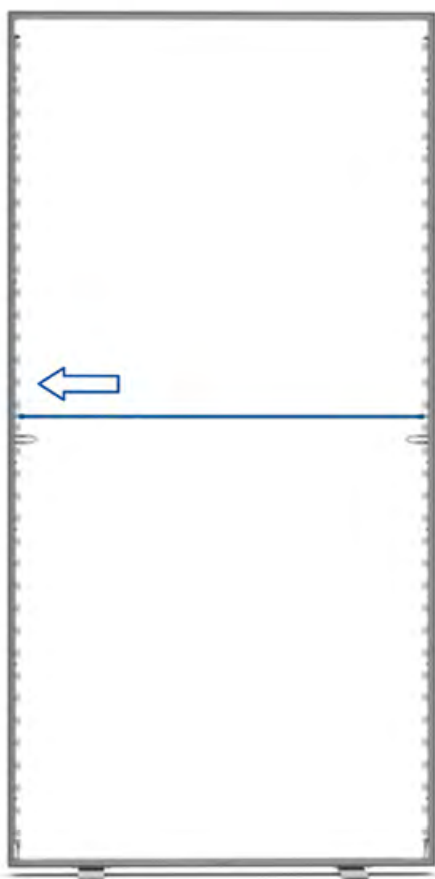


85x200 cm
85x245 cm

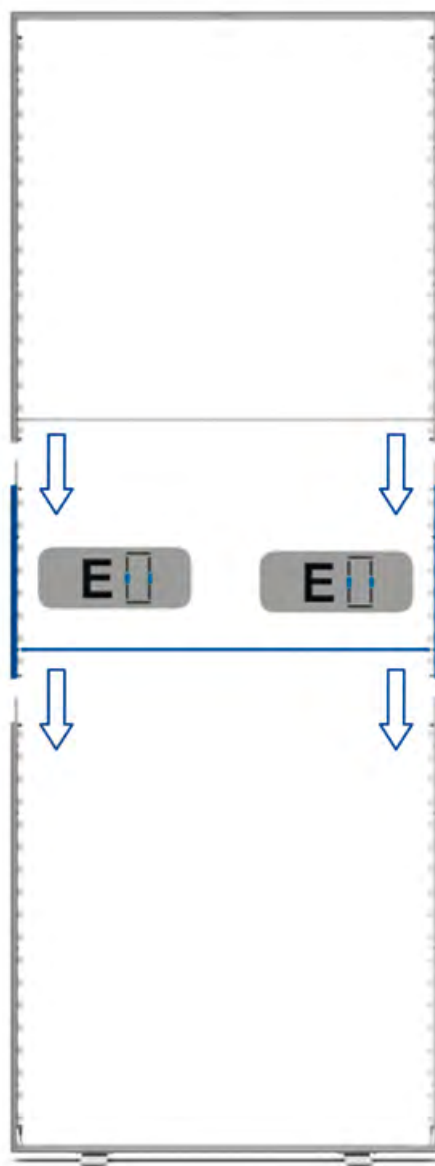
100x200 cm
100x245 cm





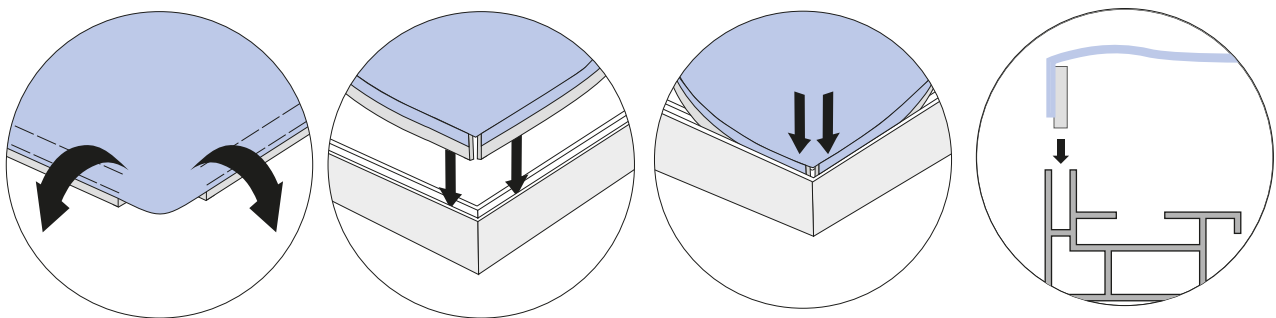


H: 200 cm

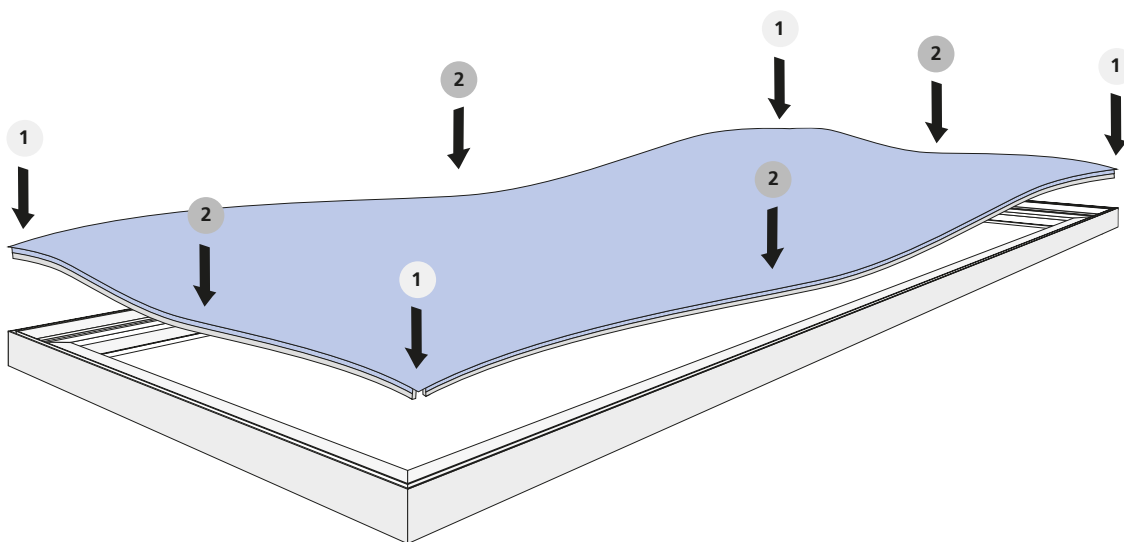


H: 245 cm

Flachkeder korrekt in die Nut einstecken (Stoff nach aussen).



- 1 Flachkeder zuerst in den Ecken...
- 2 ... und anschliessend von der Mitte nach aussen einspannen.



Hier geht's zum Montagevideo
Keder einspannen



